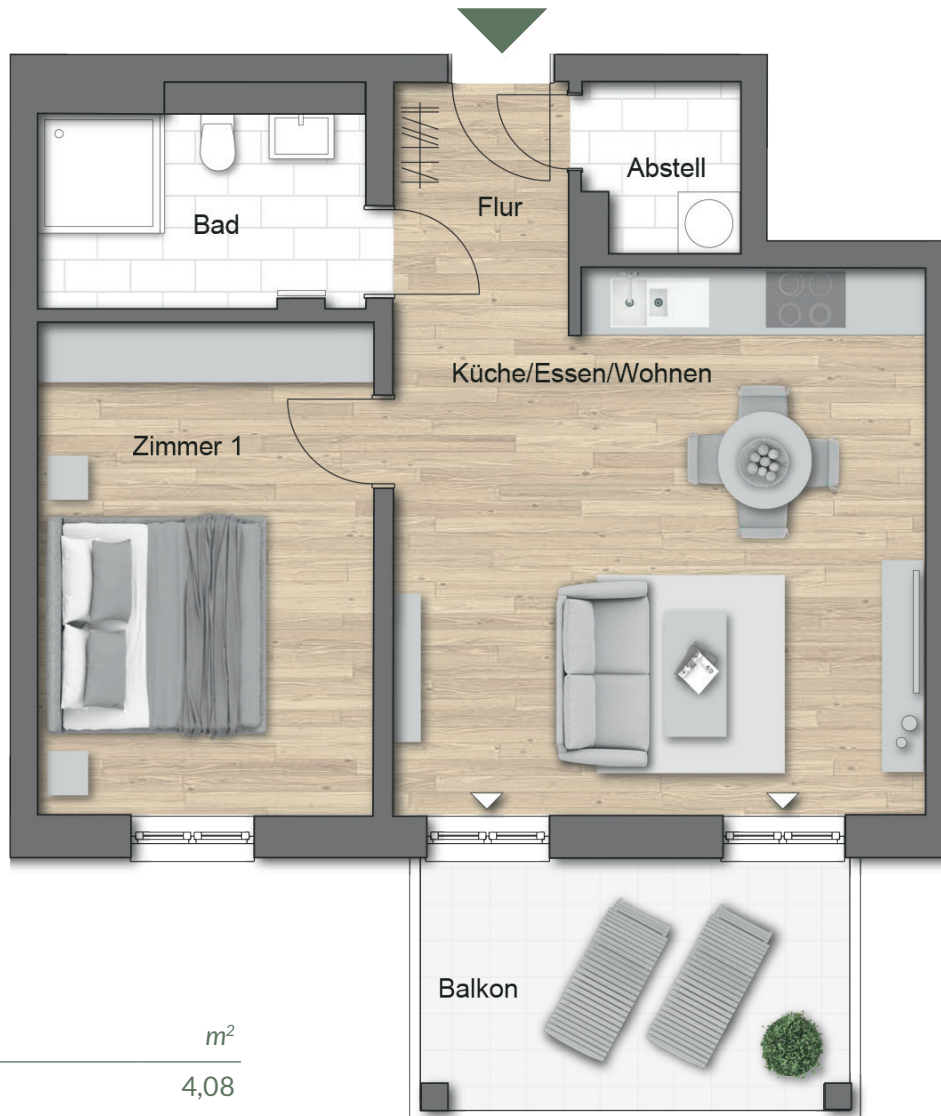
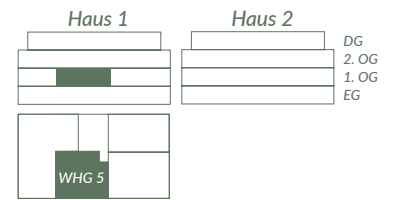


SCHÖFFERGÄRTEN, Gernsheim

Haus 1, Wohnung 5, barrierefrei

2 Zimmer, 1. Obergeschoss



| Wohnfläche | m ² |
|---------------------------------------|----------------|
| Flur | 4,08 |
| Abstell | 2,32 |
| Wohnen | 25,67 |
| Zimmer | 15,33 |
| Bad | 6,29 |
| Balkon (50% von 9,69 m ²) | 4,85 |
| Gesamt | 58,54 |



WILMA